

Flat World Project Management



www.flatworldgs.com/solutions/project-management

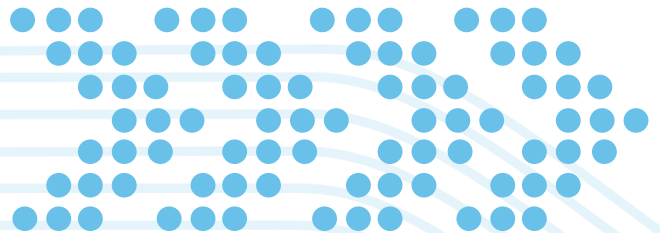
Our Company

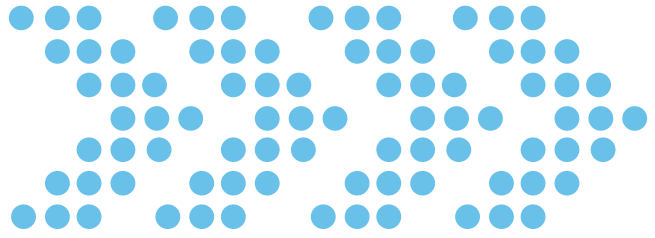
Logistics without limits.

At Flat World Global Solutions, we believe in a culture of excellence that is built upon a foundation of continuous improvement.

We know how fast your global supply chain can change. Our innovative technology and full suite of services can help you handle all aspects of your supply chain demands.

Our solutions include domestic and international transportation, technology integration, customized crating, customs brokerage, warehousing and distribution, and project management.





Project Management

We provide our clients with a best-in-class customer experience on every project.

Choice, visibility, service, and net costs are always at the forefront of every commercial property project. Flat World provides optimum solutions to challenging projects through the use of cutting edge logistics technology.

Flat World is a consumer-driven company that combines a high level of visibility to FF&E and OS&E goods from issuance of the purchase order to installation at the job site with proven cost containment strategies, all designed to deliver a superior customer experience. We strive to enhance our clients' productivity, profitability, performance and marketplace competitiveness.



Our Services

- **Purchase Order Management**
- **FF&E and OS&E Shipment Management**
- **Warehouse Storage & Site Delivery**
- **Installation of FF&E & OS&E Commodities**
- **Comprehensive Online Status Reporting**
- **Invoice Audit / Cost Management**
- **Project Specific Customer Service**
- **Freight Claims Management**





Freight Management

We have the ability to handle all types of freight: small package, LTL, TL, rail, expedited, as well as international air/ocean. Our team will ensure that all regulations are met and documentation is accurate prior to a shipment departing. Through our international division, we are able to handle your broker and customs clearance to reduce the risk of delays at the border. When purchase orders are ready our team will route the most efficient and cost effective mode for each project/purchase order to meet each deadline.



PO Management

Our team uploads POs to our online cloud based software, which allows us to confirm the supplier has received the PO, determine lead time and ensure the goods will be ready by the required date. All of this data is entered into our system and readily available. In addition, customized reports are sent once a week, containing pertinent information regarding the project and PO statuses.



Warehouse Management

Warehouse solutions are offered in all major markets; through our extensive network of agents and via our owned assets. Each warehouse is put through an extensive vetting process to ensure that they are up to our standards and able to execute operational excellence. All warehouse inventory is conducted based on original PO spec numbers - making the delivery request streamlined and accurate.



Installation Management

Flat World handles installation of Fixture, Furniture and Equipment (FF&E) and Operational Supplies and Equipment (OS&E), giving us a true turnkey solution for our customers. We use 3 traveling crews that handle multiple installations at any given time. We use our own crews for installation to ensure the highest quality install on all of our projects.

Hive: Cutting-Edge Technology

Flat World understands the importance of visibility, and our technology provides project status from a macro level down to purchase order details with the click of a button.

Inbound Shipment Manager

Purchase orders moving as inbound shipments have all details readily available, including carrier, ETA, BOL, PRO#, PODs and ultimately, receiving report information.

Outbound Shipment Manager

Purchase orders moving as shipments outbound to project site have all details readily available, including inventory level in the warehouse, delivery ticket information and sign-off.

Invoice Manager

For each project, all invoices are readily available for review and accessibility, downloadable if needed.

Project Status Reports

Customized, up-to-date project status reports are available in multiple formats - allowing access to information when you want it and how you want it.

Project Costs

Visibility to overall project status including the project's cost as a percentage of the overall Cost of Goods is provided for each project.

Client Dashboard

Our customizable dashboard gives customers visibility to real-time metrics and key performance indicators for a specific project.

CLIENTS
PROJECTS
BID MANAGER
PROJECT MANAGER
WAREHOUSE
INBOUND
OUTBOUND
INSTALLATION
INVOICE MANAGER
REPORTS
UTILITIES
API IMPORTS (142)
OCR IMPORTS (3)
NEEDS ATTENTION (0) (193)

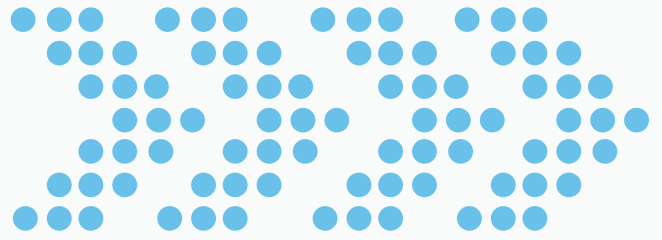
Reports

| Report Name | Download | Email | Sche |
|---|-------------|-------------|-------------|
| Project Status | PDF | PDF | PDF |
| Open PO Report | PDF | PDF | PDF |
| Back-order Report | Excel | Excel | Excel |
| Expanded Open PO Report | PDF - Excel | PDF - Excel | PDF - Excel |
| Inbound Project Report | PDF - Excel | PDF - Excel | PDF - Excel |
| Inbound Project Report w/Estimated Ready Date | PDF - Excel | PDF - Excel | PDF - Excel |
| Inbound Project Report w/ Must | PDF - Excel | PDF - Excel | PDF - Excel |

% of Released Orders Shipped by Month for project:

| Month | Percentage |
|----------------------|--------------|
| April 2021 | 14 % |
| September 2021 | 10 % |
| October 2021 | 5 % |
| December 2021 | 31 % |
| January 2022 | 7 % |
| February 2023 | 5 % |
| NOT SHIPPED | 29 % |
| Total Shipped | 100 % |

Purchase Order Management



Comprehensive online reporting, including PO Status, Bill of Lading Status, Delivery Status and Project Cost.

For each project, our dashboard provides an overview of PO's and project statuses towards completion. The supporting data is easily accessed in multiple formats, such as Open PO's, with or without detail, Inbound PO's and warehouse inventory.

PO Status

| Project Summary | | Active PO's | Inactive PO's | Closed PO's | Cancelled PO's | |
|-----------------|----------------|-------------|------------------------|-----------------------|-----------------|----------------|
| PO # | Declared Value | Source | Supplier | Ship From | Ship To | Follow Up Date |
| 18-025-0023 | \$ 45,984.30 | Manual | National Wallcovering | North Little Rock, AR | Greenville, SC | 01/10/2022 |
| 20-0222-0015 | \$ 1,485.00 | Manual | National Wallcovering | North Little Rock, AR | Fruitland, MD | 09/28/2021 |
| 16-033-0050 | \$ 13,469.10 | OCR | National Wallcovering | NORTH LITTLE ROCK, AR | Union City, TN | 04/28/2021 |
| 18-007-0018 | \$ 7,586.00 | Manual | DAC ART CONSULTING | ATLANTA, GA | Stillwater, OK | 12/09/2021 |
| 19-006-0109 | \$ 4,583.75 | Manual | Designform Furnishings | Irvine, CA | Tuscaloosa, AL | 02/16/2023 |
| 20-1214-0015 | \$ 11,542.50 | OCR | Angela Eckburg | Olive Branch, MS | Plattsburgh, NY | 10/19/2021 |

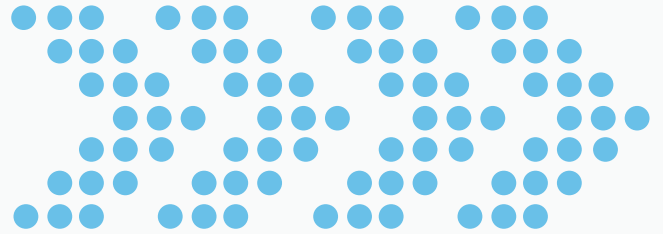
PO Information

PO-specific information includes detailed data, as well as the latest up-to-date information in the notes section.

PO Reports

Open PO reports provide visibility of open PO's by vendor, ready dates and latest comments or information available.





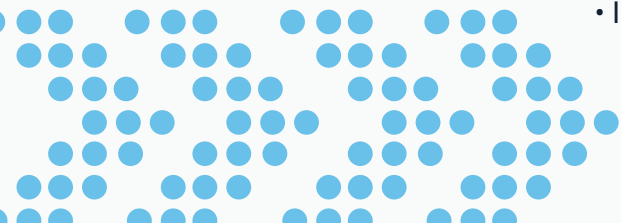
Warehouse & Installation

Flat World Project Management offers project-specific solutions that include warehousing and installation for local, national and international projects. We take pride in offering 7 owned warehouse locations across the U.S., as well as partnerships with storage companies in areas where we don't operate. We vet non-owned warehouses with a strict 18-point inspection process that includes details such as security, cleanliness, organization, ease of operation, receipt and pull-out process, and warehouse details (square feet, doors, trucks, etc.).

We've spent the past decade building our service reputation and we understand that superior service is the cornerstone of being an effective partner to our customers.

Services Provided

- Storage (public, contract and seasonal warehousing available)
- Container loading and unloading
- Cross Docking
- Warehouse Management System
- Pick and Pack
- Break-Bulk Shipping
- Installation of FF&E and OS&E commodities



U.S. Locations



Dallas, TX

- 📍 5251 Frye Road
Suite 150
Irving, TX 75061
- 📏 43,000 Square Feet
- ✈️ 5.6 Miles from DFW Airport

Chicago, IL

- 📍 500 E. Devon Avenue
Suite C
Elk Grove Village, IL 60007
- 📏 76,034 Square Feet
- ✈️ 8.6 Miles from ORD Airport

Atlanta, GA

- 📍 850 Douglas Hills Road
Suite 400
Lithia Springs, GA 30122
- 📏 84,000 Square Feet
- ✈️ 15.7 Miles from ATL Airport

Houston, TX

- 📍 1155 Independence Parkway
Suite 200
Deer Park, TX 77536
- 📏 104,000 Square Feet
- ✈️ 31.4 Miles from IAH Airport
- 🚢 7.1 Miles from the Port of Houston

St. Louis, MO

- 📍 384 Hazelwood Logistics
Center Drive
Hazelwood, MO 63042
- 📍 8949 & 9043 Frost Avenue
Berkeley, MO 63134
- 📏 186,600 Square Feet
- ✈️ Less Than 5 Miles from STL Airport

Denver, CO

- 📍 18000 E. 40th Avenue
Building 23 Unit C Suite 20
Aurora, CO 80011
- 📏 44,000 Square Feet
- ✈️ 12.1 Miles from DEN Airport

Baltimore, MD

- 📍 7001 Quad Avenue
Suite D
Rosedale, MD 21237
- 📏 114,750 Square Feet
- ✈️ 16.1 Miles from BWI Airport
- 🚢 4.6 Miles from the Port of Baltimore

The Projects

A sample of the types of projects we've worked on and services we've offered for each.

Aloft San Francisco, CA | 352 Rooms **FWI**

Marriott Princeton, NJ | 300 Rooms, 2 Suites **FWI**

Courtyard Naples, FL | 98 Rooms, 4 Suites **W**

Hilton Pasadena, CA | 296 Rooms **F**

Doubletree Orlando, FL | 742 Rooms **FW**

Waikoloa Ocean Tower, HI | 600 Rooms **F**

Homewood Suites San Diego, CA | 118 Rooms **FWI**

Waldorf Astoria Beverly Hills, CA | 151 Rooms **FW**

F = Freight

W = Warehousing

I = Installation





Explore our door-to-door suite of international services.

Moving cargo across the globe involves tremendous risk and complexity. We're your end-to-end partner, minimizing that risk, providing ongoing visibility and turning complexity into a strategic advantage.

Air & Ocean Freight

Flat World's international division has been an **IATA-licensed** freight forwarder since 1980, with expertise in HAZMAT shipping. We're also **C-TPAT-certified** and can help move your goods via both **FCL and LCL ocean freight**.

Custom Crating

From fine art to multi-ton machinery, we can create **ISPM-15** compliant wood packaging to keep your cargo safe no matter where it's going.

Cold Chain & Temperature Controlled

For products that need to be kept cold, our St. Louis and Atlanta facilities are equipped with temperature-controlled environments.

Chinese Exports

In China, our Shanghai representative oversees exports, and our extensive network includes partners on the ground around the globe to manage your shipment no matter where it goes.

Customs & Compliance

Our licensed U.S. Customs Brokers can help you with **bond filing, remote location filing and customs clearance**. Our St. Louis warehouse is a General Order (GO)/Customs Exam Site (CES), and our Atlanta, Chicago, Dallas and St. Louis warehouses are Container Freight Stations. (Our newest warehouses in Baltimore and Denver are slated to be CFS as well.)

Freight Claims Management

When your freight gets damaged or goes missing, we're here to help.

By providing you with an end-to-end solution for service recovery of Overage, Shortage and Damage claims (or OS&D claims), Flat World streamlines the labor-intensive process and reduces your internal costs.

We'll integrate your business processes with Flat World's technology and expertise so you can feel confident that you're recovering maximum, hard-dollar claim amounts from your carriers.



Web-based Platform

Our freight claims platform includes features for claims management, reporting and analysis tools, data management and data storing—allowing you to improve control over claim information.



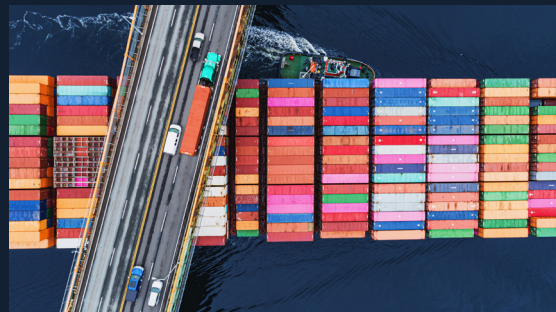
Centralized System

Finally, entering claim information is easy and organized. Our system houses claims history, claimant communication, transactions and carrier correspondence, so you can easily identify



Claims Analysis

If you're experiencing increased shipments with OS&D claims, we can perform an analysis to evaluate the underlying cause and determine a solution.



Cargo Insurance

Cargo insurance is available for each shipment to provide an additional protective measure for your freight.

In-House Truckload Brokerage

What you can expect from us:

- Friendly, fast response times
- Individualized account management from OTR team
- Competitive market pricing
- Efficient, professional drivers committed to safety and service
- Tracking visibility via Pipeline
- Accurate billing and invoicing

Supply chain options with Flat World OTR:

- 53' Dry Van
- Refrigerated
- Hazmat/Tanker Endorsed
- Flatbed
- OS/OW
- Hot Shot/Expedited
- Import/Export Container Drayage (Port or Rail ramp)
- Intermodal
- Domestic Next-Day Air
- Shipments into/out of Mexico and Canada



Our Team



Stacey Gallagher

Vice President of Project & Process Management

sgallagher@flatworldgs.com



T.J. Schrik

Director of Business Development

tschrik@flatworldgs.com

To learn more about Flat World Project Management, visit:
www.flatworldgs.com/solutions/project-management

